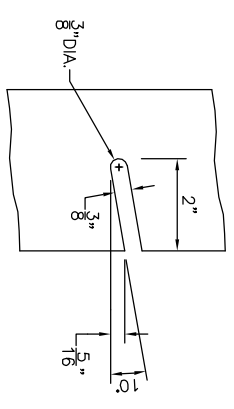


LEFT LEG  
SCALE: 3"=1'-0"



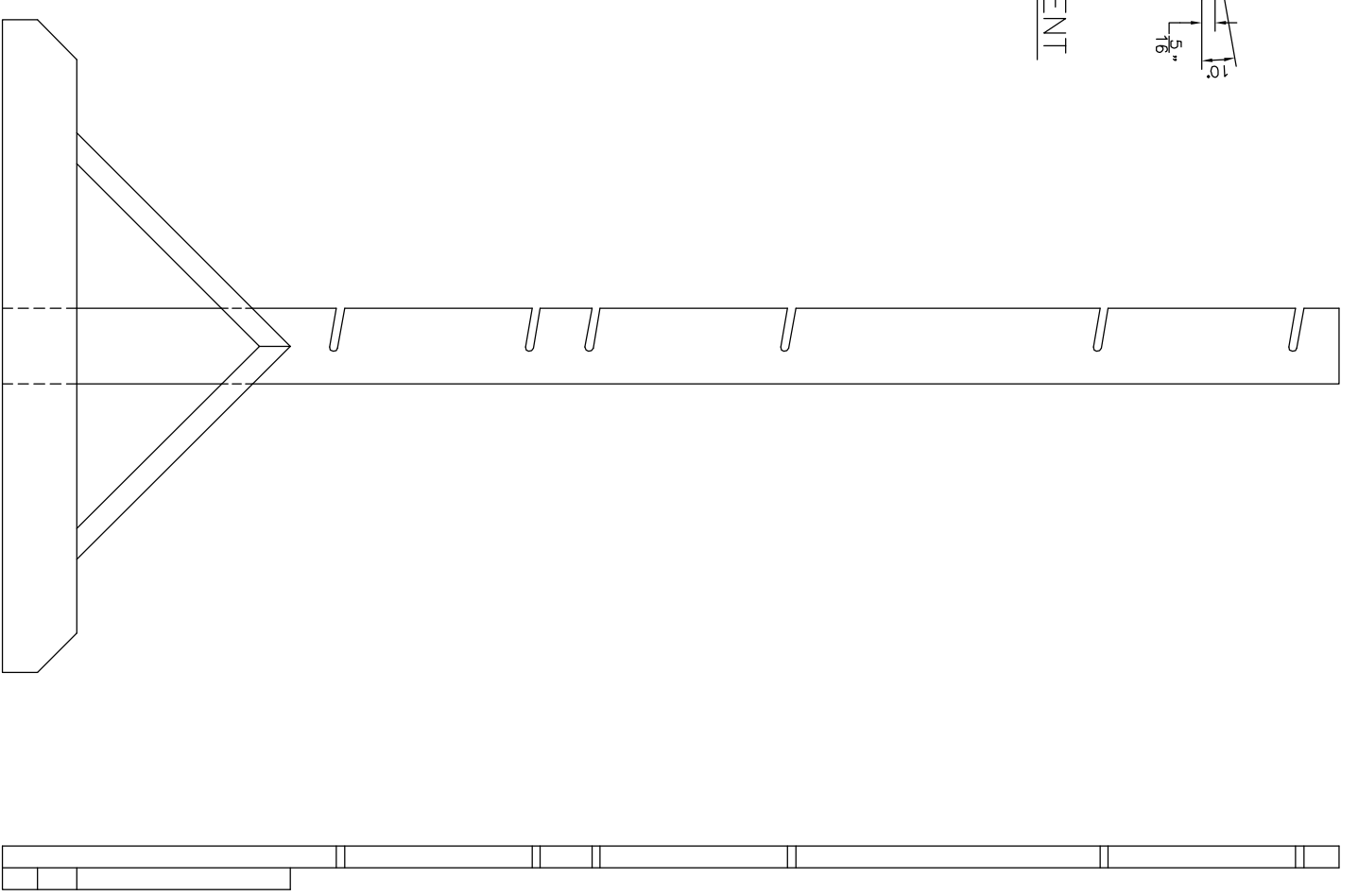
SLOT ENLARGEMENT  
SCALE: HALF

NOTE:  
DIMENSIONS SHOWN ARE TYPICAL ON BOTH  
LEGS (RIGHT LEG IS ON OPPOSITE HAND)

BILL OF MATERIAL LEG ASSEMBLY	
(2)	1" x 3 1/2" x 61 1/2"
(2)	1" x 3 7/16" x 30"
(4)	1" x 1" x 18 3/4"

NOTE:  
FOR LASTING RESULTS  
USE #1 GRADE LUMBER.

NOTE:  
FOR TARGET BOX ASSEMBLY  
SEE SHEET 1 OF 2



RIGHT LEG  
SCALE: 3"=1'-0"

# LEG ASSEMBLY

AIR RIFLE TARGET STAND		SCALE AS SHOWN	DATE
LEG ASSEMBLY		SHEET 2 OF 2	DATE: 12/12/2004
CIVILIAN MARKSMANSHIP PROGRAM		MATERIAL: WOOD	JOB NO. CMP-1
PORT CLINTON, OHIO 43452		Daniel B. Torfs, Sr. d.b.a.	524 Jefferson Street • Port Clinton, OH 43452
DTS Drafting Services		phone (419) 341-2921 • e-mail: dts@adelphia.net	
DRWN BY: D. TORFS	REVISION	DATE	